

# STREAMLINE CLOSED CIRCUIT GAS BOOSTED

## Description

The Solahart Streamline closed circuit system is a split system solar water heater with roof mounted slimline collectors and a ground mounted outdoor storage tank. It is suitable for use in low to high solar gain areas. The closed circuit design protects the system from freezing, making it suitable for regions prone to frost.

The Streamline closed circuit system offers a choice of either the Solahart Kf or J collector. Both model collectors feature Solahart's revolutionary multi-flow collector panel which uses a huge 35 risers to extract the maximum amount of energy from the sun. The ultra-high efficiency absorber of the Kf collector with its Black Chrome selective surface maximises the absorption of available solar energy providing even more savings.

The system is equipped with a gas booster which senses when boosting is required to ensure continuous hot water regardless of the weather. The water heater also offers the convenience of dual temperature outlets, so tempered water can be delivered to the bathrooms and hot water can be delivered to the kitchen and laundry.



## Key Features

- Stylish slimline design
- Solar connections to top of the tank makes for simpler and tidier installation
- Dual temperature outlets
- Variable flow through solar collectors to maximise solar gain
- Choice of collectors to suit high to low solar gain areas
- Suitable for frost prone areas
- 5 star efficiency with instantaneous gas boosting
- Natural gas and propane models available
- Flexible installation options

## Key Benefits

- Save 50% to 80% on your water heating energy consumption\*
- Continuous hot water regardless of the weather
- Can qualify for valuable government environmental incentives\*
- Reduced energy use saves on CO<sub>2</sub> emissions every year\*
- Peace of mind with Solahart's 5/3/1 year warranty\*
- Space efficient and flexibility with installation

+ Warranty Details: 5/3/1 - 5 year cylinder and collectors, 3 year labour on cylinder, 1 year parts and labour, 1 year labour on collectors, applies to a single family domestic dwelling only. All other applications have a 3/1/1 warranty - 3 year cylinder, 1 year collectors, 1 year parts and labour.

\* Savings of 50%-80% shown are based on Australian Government approved TRNSYS simulation modelling. Savings and incentives will vary depending upon your location, type of Solahart system installed, orientation and inclination of the solar collectors, type of water heater being replaced, hot water consumption and fuel tariff. Maximum financial savings off your hot water bill are achievable when replacing an electric water heater on continuous tariff.

# Streamline Closed Circuit 'DJV' & 'DKV' - Gas Boosted Systems

These systems are suitable for frost areas.

## DJV & DKV Systems

Model	271	272	273
Tank Model	DBV	DBV	DBV
Collector DJV Series	J	J	J
Collector DKV Series	Kf	Kf	Kf
No. of collectors	1	2	3

## Solar Storage Tank

Tank Model	DBV	
Storage capacity	litres	270
	US gal	71
Installation	outdoor	
Boost capacity (@ 25°C rise)	litres/min	26
	US gal/min	6.9
Weight empty	kg	167
	lbs	368
Weight full	kg	437
	lbs	963

## Gas Boosted Specifications

Booster type		electronic instantaneous
Booster size	litres / min	26
Supply voltage *	volts	220 - 250
Min. flow rate	litres / min	3.0
	US gal / min	0.8
Frost protection	standard	
Thermal input		
natural gas	MJ/h	199
propane	MJ/h	199
Gas connection	R¾/20	
Gas pressure		
maximum	kPa	3.5
minimum – natural	kPa	1.13
minimum – propane	kPa	2.75

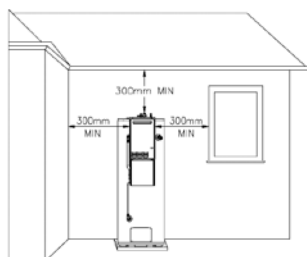
\* A weather proof General Power Outlet (GPO) is required within 1.2m of the water heater

## Water Supply

TPR valve setting	kPa	1000	psi	145
ECV setting	kPa	850	psi	125
Max. supply pressure				
	with ECV	kPa	680	psi
without ECV	kPa	800	psi	115
Min. supply pressure	kPa	140	psi	20
Water connections	cold	RP¾/20		
	hot	RP¾/20		
	warm	RP¾/20		
Closed circuit	solar	DN15 compression fitting		

\*Expansion Control Valve (ECV) is not supplied.

## Clearances



Specifications are subject to change without notice.

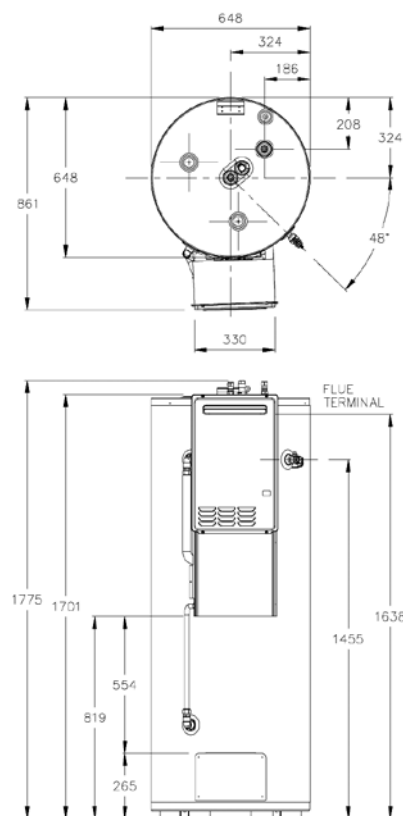
## Collector

Aperture (heating) area	m²	1.87	ft²	20	
Dimensions	length	mm	1937	in	76.3
	width	mm	1022	in	40.3
	height	mm	77	in	3.0
Capacity	litres	3.5	US gal	0.9	
Weight	empty	kg	42	lbs	93
	full	kg	46	lbs	101
Working pressure	kPa	80	psi	12	
Absorber surface Kf	Chromonyx selective surface				
Absorber surface J	Black polyester powder coat				
Absorber material	Steel				
Riser material	Steel				
Number of risers	35				
Tray material	0.6 mm Aluminium				
Insulation material	55 mm polyester blanket				
Glass	3.2 mm tempered low iron				

## Collector Installation

Roof area dimensions		1	2	3
Length	m	2.0	2.0	2.0
	in	78.8	78.8	78.8
Width	m	1.2	2.3	3.4
	in	47.2	90.6	133.9
<b>Solar Kits - J &amp; Kf Collectors</b>				
Collector kit - 1 collector (12104298)		1	0	0
Collector kit - 2 collectors (12104299)		0	1	1
Collector add on kit (12104300)		0	0	1

## Dimensions



 **Solahart**

hot water free from the sun